

**PLANTA**  
ESC 1:25

55

21

14

30

21

61

6 N12 ø8.0 c/B C=66

21

21

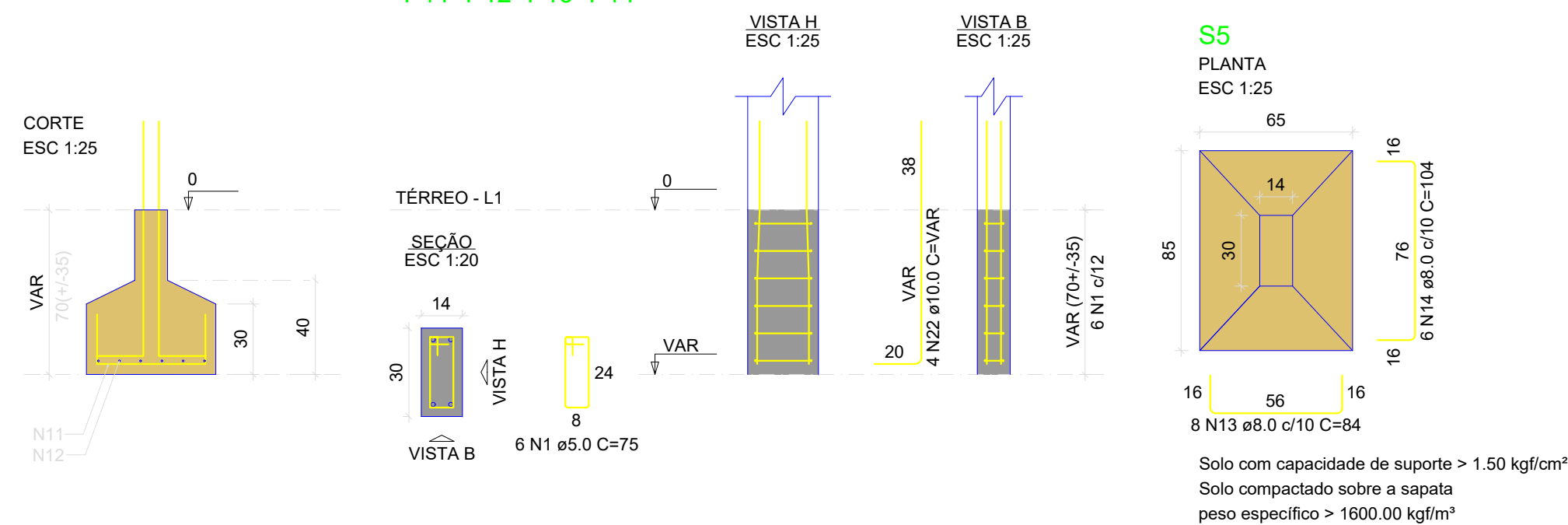
46

8 N11 ø8.0 c/B C=84

Solo con capacidad de soporte > 1.50 kg/cm<sup>2</sup>

Solo compactado sobre a sapata

peso específico > 1600.00 kg/m<sup>3</sup>



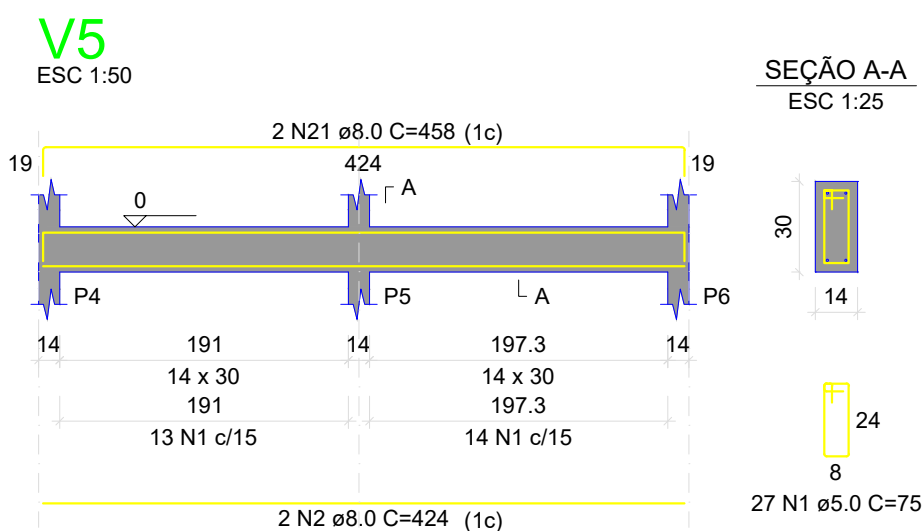
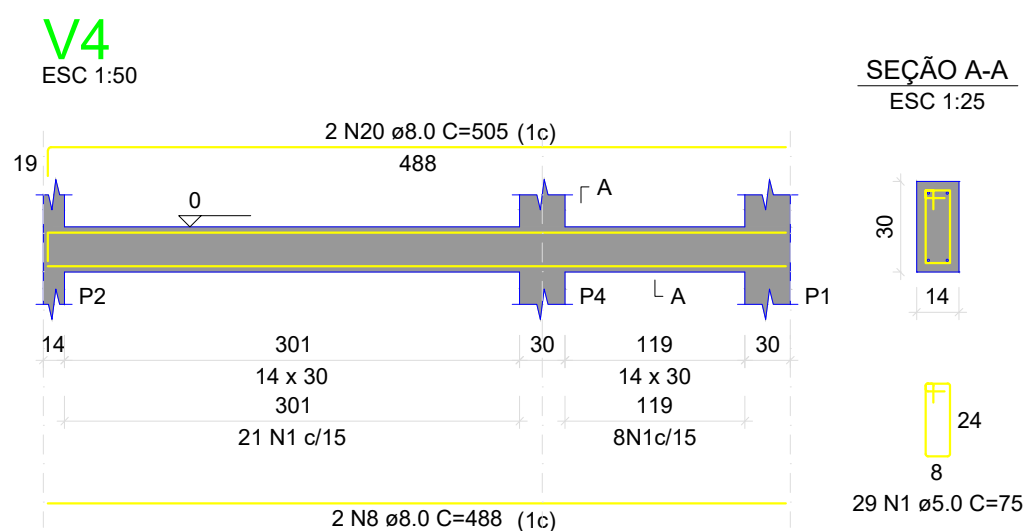
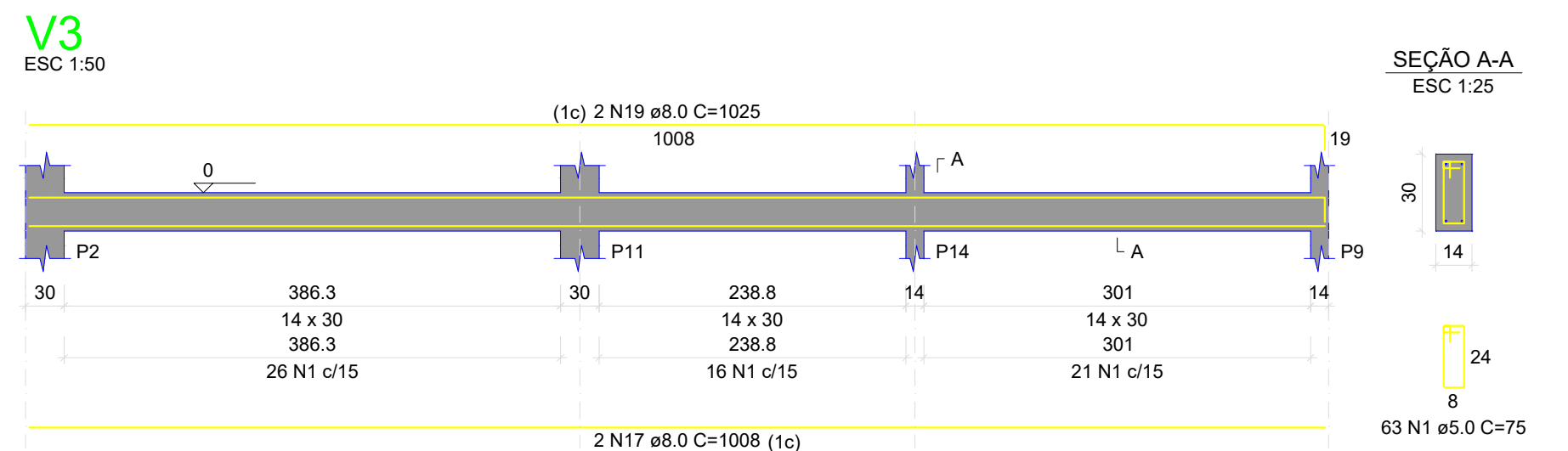
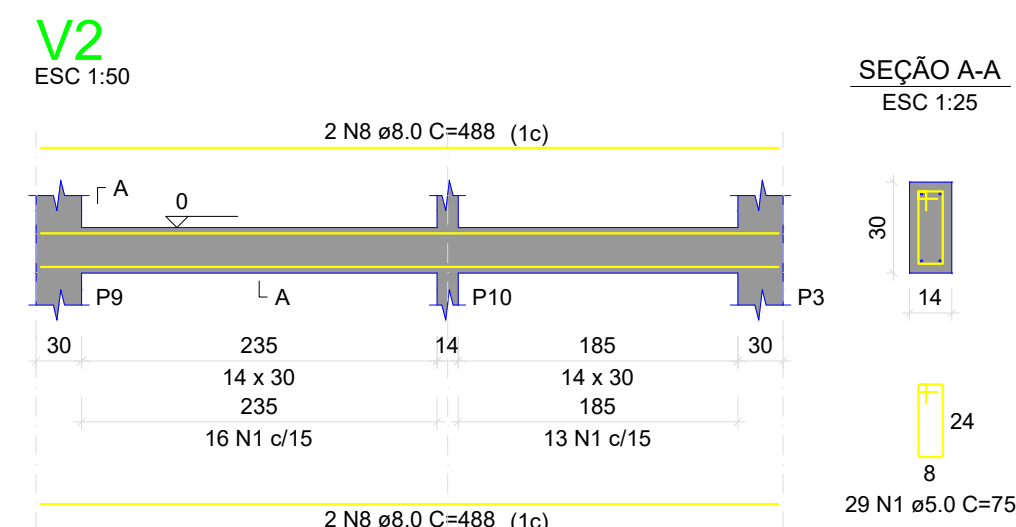
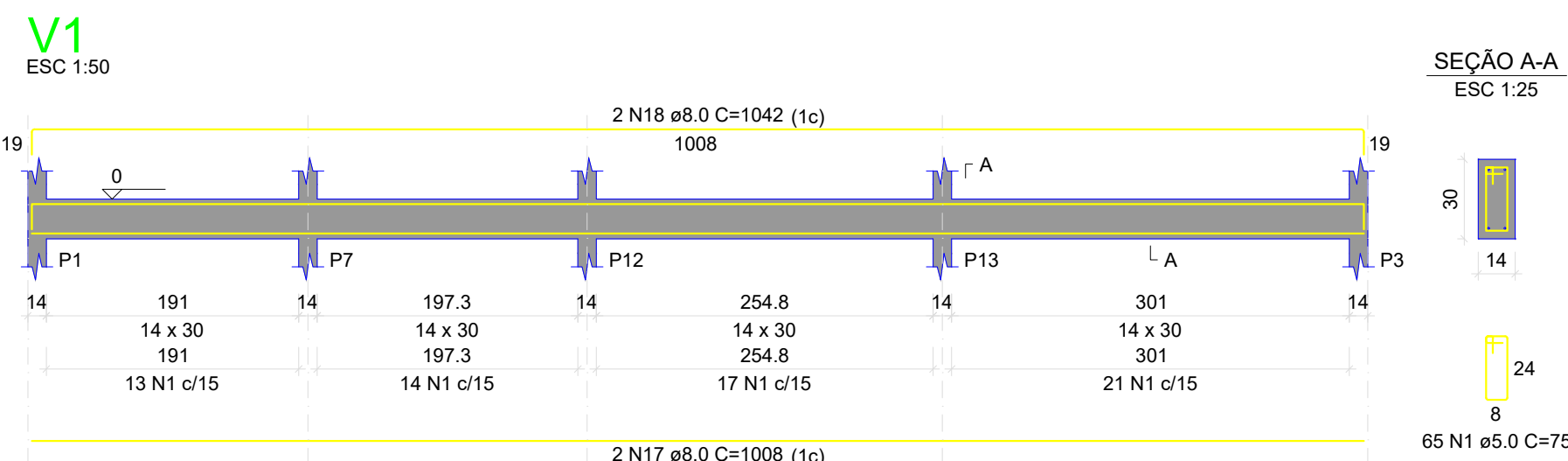
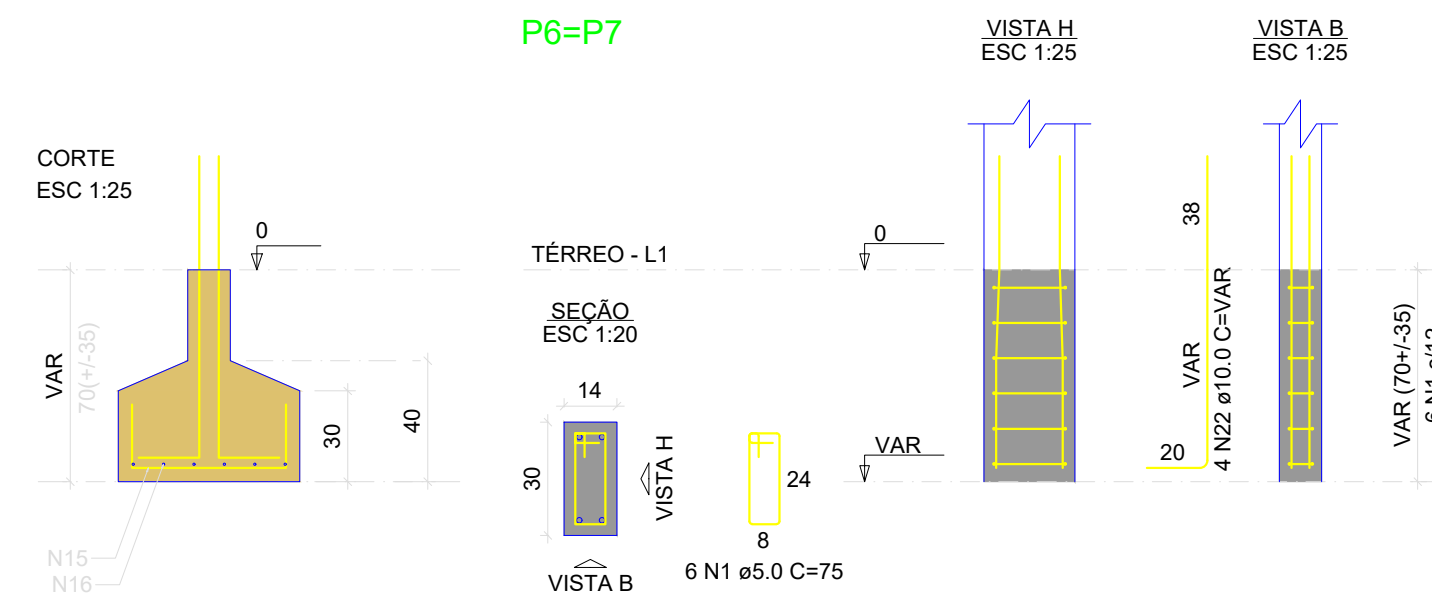
**S6=S7**  
**PLANTA**  
ESC 1:25

The technical drawing shows the top and side views of the S6=S7 plant. The top view is a rectangle with a width of 60 and a height of 21. It features a central rectangular cutout with a width of 14 and a height of 30. The side view shows a height of 21 and a width of 66. The drawing is labeled with dimensions and a scale of 1:25.

60  
21  
14  
30  
21  
66  
6 N16 a6 0 c9 C=104  
21  
8 N15 a6 0 c9 C=89

Solo con capacidade de suporte > 1.50 kg/cm²

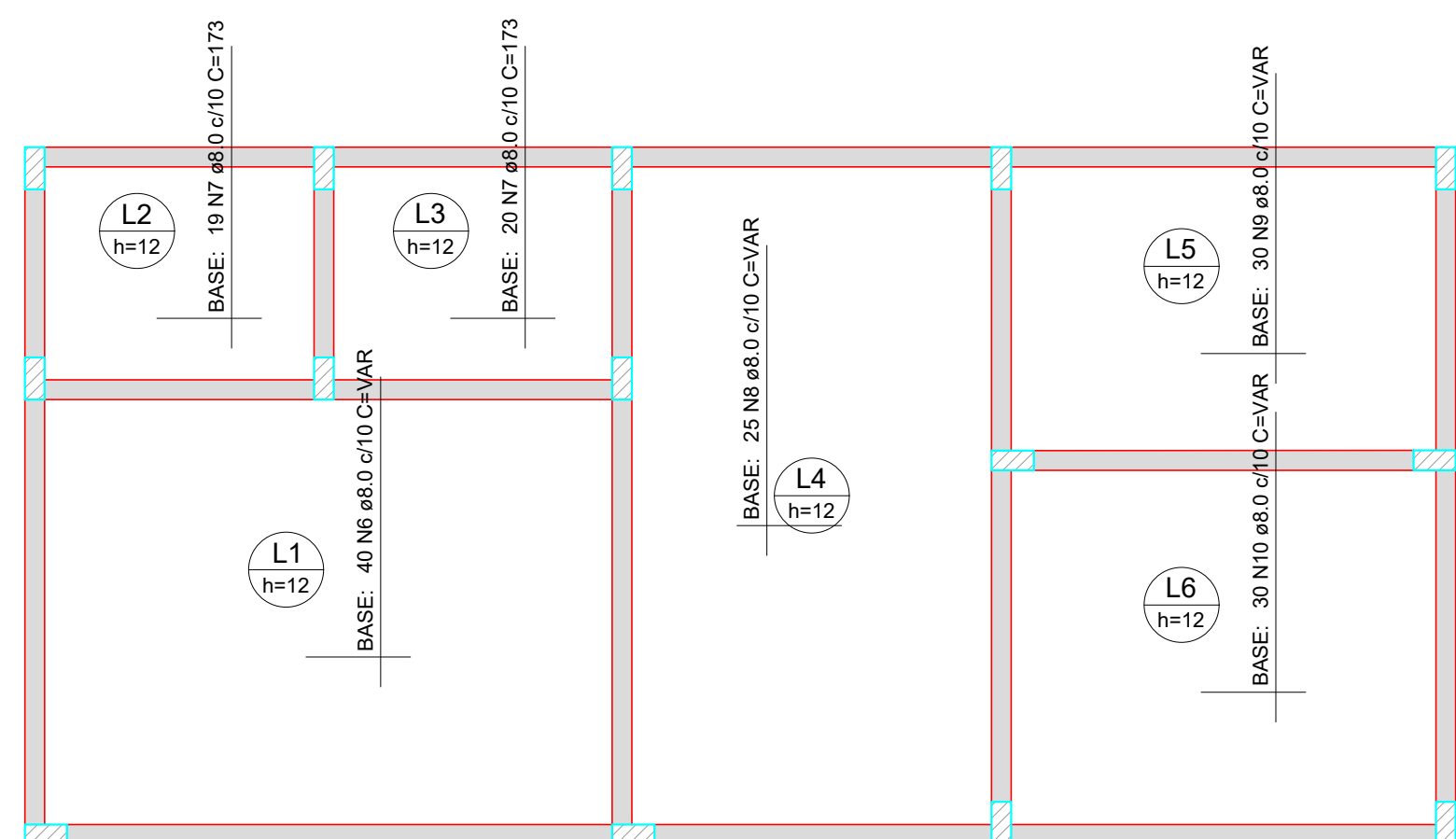
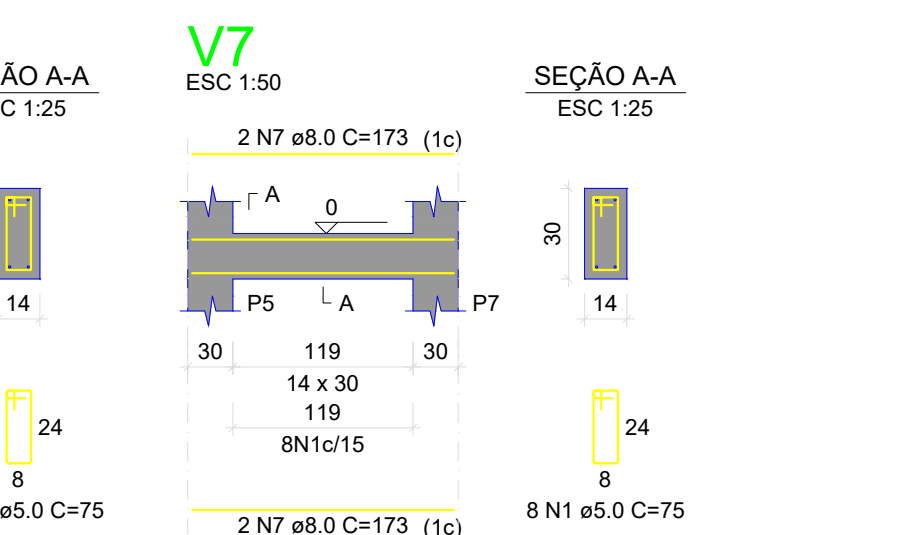
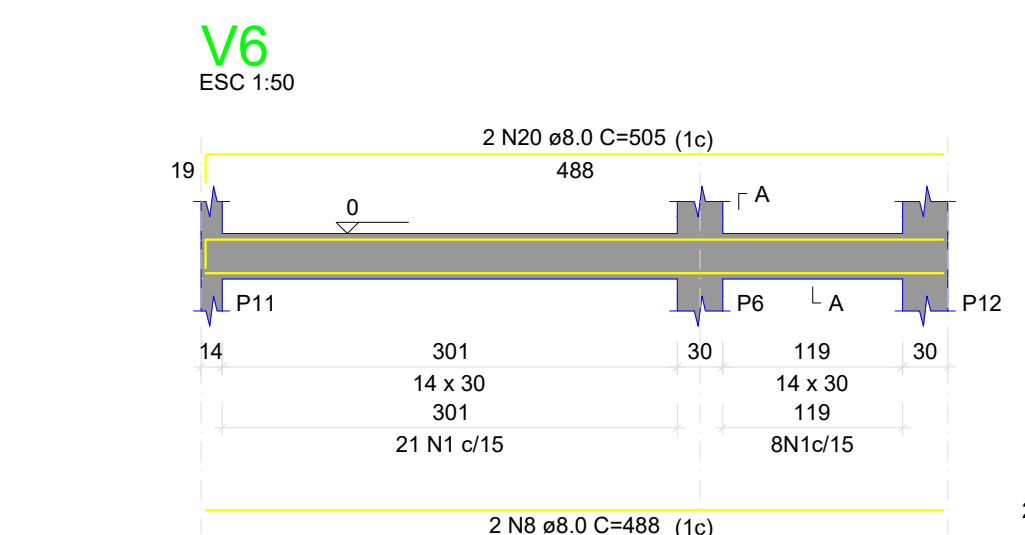
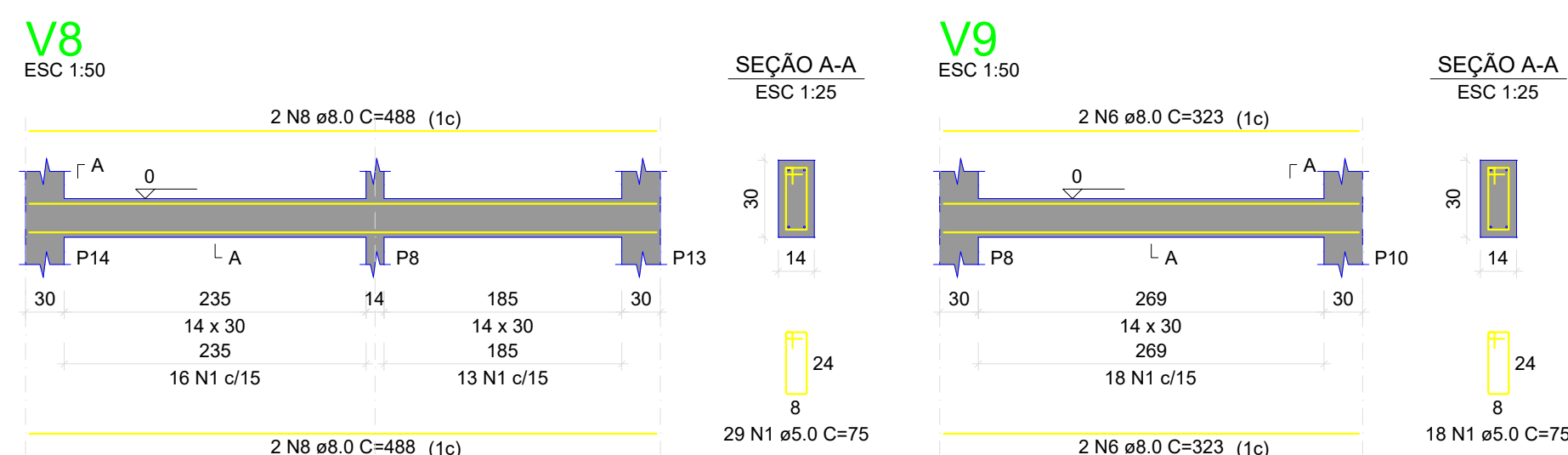
Solo compactado sobre a sapata  
peso específico > 1600.00 kg/m³



RELAÇÃO DO AÇO						
Negativos X		Negativos Y		15xP1		
P5	2x5	2x5	V1	V1	V1	V1
V2	V3	V6	V4	V4	V4	V4
V5	V6	V3	V7	V7	V7	V7
V8	V9					
AÇO	N	DIAM (mm)	QUANT	C.UNIT (cm)	C.TOTAL (cm)	
CABO			381			25075
CA50	2	8,0	32	424		13568
	3	8,0	15	VAR	VAR	
	4	8,0	15	219	VAR	3295
	5	8,0	47	VAR	VAR	
	6	8,0	89	VAR	VAR	
	7	8,0	43	173	7439	
	8	8,0	37	VAR	VAR	
	9	8,0	30	VAR	VAR	
	10	8,0	30	VAR	VAR	
	11	8,0	88	84	7392	
	12	8,0	66	99	6534	
	13	8,0	8	84	672	
	14	8,0	6	104	624	
	15	8,0	16	89	1424	
	16	8,0	12	128	1248	
	17	8,0	4	1038	4052	
	18	8,0	2	1042	2084	
	19	8,0	2	1042	2084	
	20	8,0	4	505	2020	
	21	8,0	2	458	916	
	22	10,0	56	VAR	VAR	

RESUMO DO AÇO			
AÇO	DIAM (mm)	C.TOTAL (m)	PESO + 10% (kg)
CA50	8.0	1311.9	569.4
	10.0	68.3	46.3
CA60	5.0	285.8	48.4
PESO TOTAL (kg)			
CA50	615.7		
CA60	48.4		

Volume de concreto (C-25) = 3.95 m<sup>3</sup>  
Área de forma = 39.20 m<sup>2</sup>



Escala 1:50

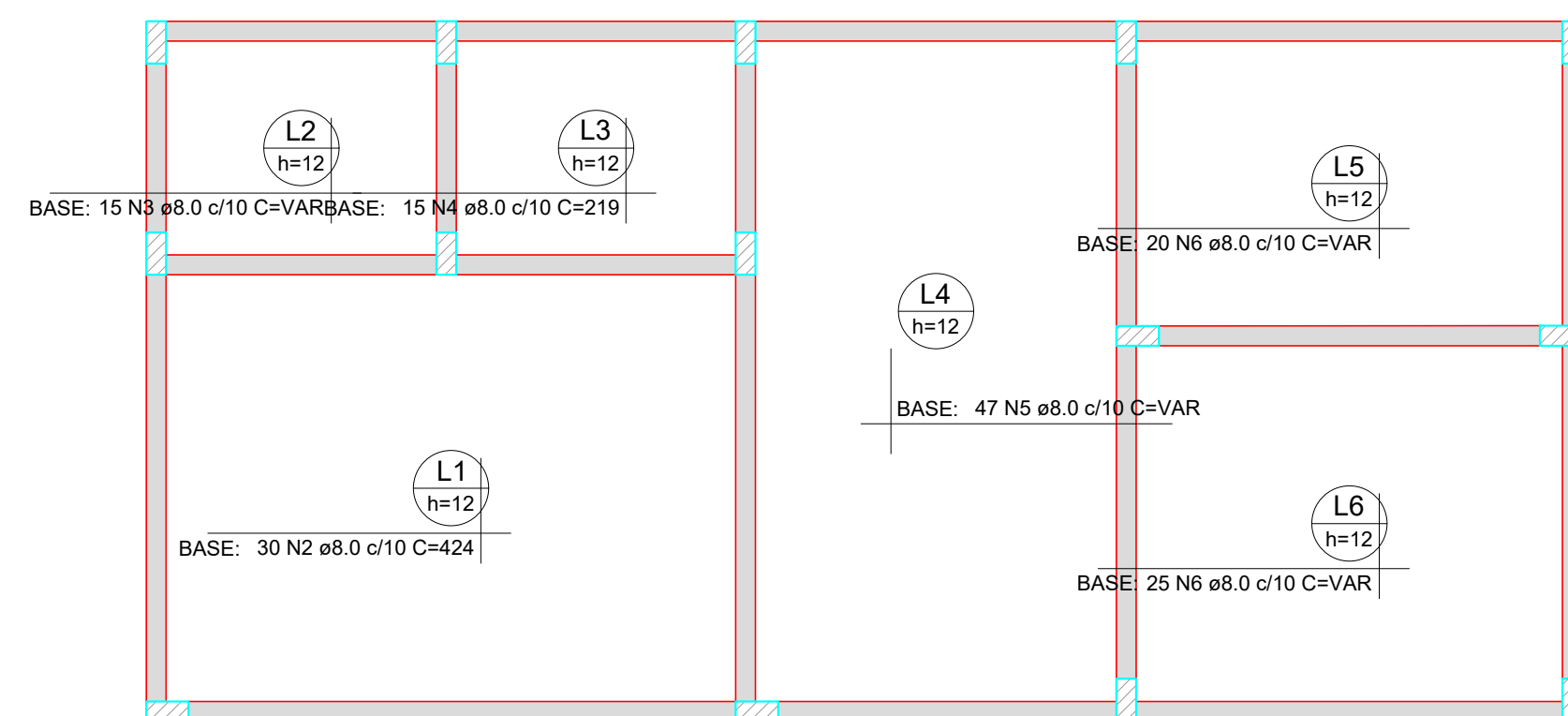
Armadura em malha distribuída na laje

Detalhe em planta

Comprimento de traspasse

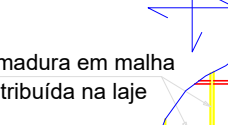
71

e8.00



Escala 1:50

Armadura em malha distribuída na laje



Detalhe em planta

Comprimento de traspasse

71

CENTRO DE EQUOTERAPIA

ASSINATURA:

ART n°:

SEQUENCIA:

DESENHO:

DATA:
-------

ESCALA:

01/04

REVISÃO: 01